



Sensory Shopping

Your guide to shopping at
The Mall, Eccles Shopping Centre



Eccles
Shopping Centre



workman
retail & leisure



Sensory Shopping at **The Mall, Eccles Shopping Centre**

We have designed this guide to help you have a pleasant and fun visit to the centre, and feel safe and supported while you are here.

This guide has been set up into sections, to help you find the information you need before you visit, and while you are at the shopping centre. The page numbers and sections are listed below:



Planning your visit:

- 3 Information on opening times**
- 4 How to get to the Eccles Shopping Centre**
- 5 Getting into the shopping centre**



When you are here:

- 6 How we will support you**
- 7 What shops we have at the centre**
- 8 Floorplan**
- 9 Places to eat**
- 10 People you may see**
- 11 Things you may see**

Address:

The Mall, Eccles Shopping Centre, Eccles, Manchester, M30 0EB

t 0161 707 3058 & Site Security 07885 484515

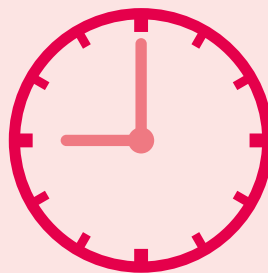
w www.ecclesshoppingcentre.co.uk

Planning your visit:

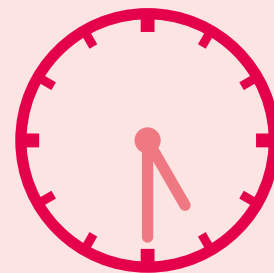
Information on opening times

The centre is open **7 days a week**, the opening times are below:

On Monday to Saturday,
we are open:



9:00 AM



5:30 PM

On Sundays and Bank Holidays,
we are open:



10:00 AM



4:00 PM

**The shopping
centre is...**

quietest:
Sunday

busier:
Saturday

busiest:
Monday -
Friday

Planning your visit:

Ways to travel to The Mall, Eccles Shopping Centre



- Eccles Shopping Centre is just two minutes from the **M602**



- The Centre is near the train station, which has regular trains to and from **Manchester City Centre**
- Once leaving the station follow the pedestrianised **Church Street**, which is between the **Malaga Drift Coffee Co** and **Scope**. The Centre will be further down on your right



- There is **a range of buses which stop directly opposite** Eccles Shopping Centre, the No33 from Piccadilly Gardens, 68 Farnwoth Bus Station, 100 Hollins Green Black Swan, 10 Shudeehill Interchange, 52 Cheetham Hill



- **Eccles Interchange** is the end of line and stops in Eccles with the Shopping Centre just over the road from the tram stop



- Cycle racks are situated in front of boothway entrance opposite Cash **Converters**

Planning your visit:

Getting into the shopping centre

You can enter the centre through **4 entrances**

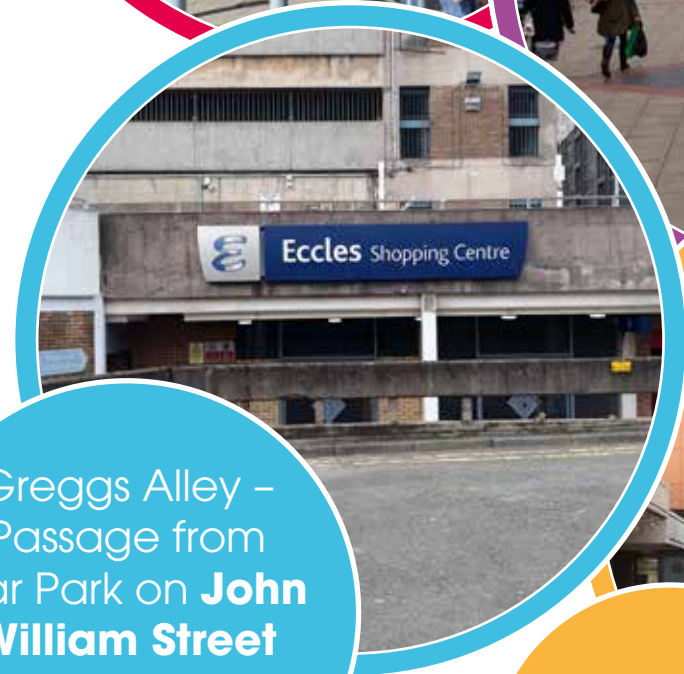
Boothway –
Opposite **Taxi
Rank** and
Morrisons



Church Street
– **William Hill /
TSB Bank**



Greggs Alley –
Passage from
Car Park on **John
William Street**
with Disabled
Parking



Southway –
Market Hall



When you are here:

How we will support you

If you need help, go to any Eccles Shopping Centre **member of Staff**



Call Security directly on **07885 484515**

The **Management Suite** is situated down Boothway Mall just head down mall with **Wilkos / Coffee Bar** to your right

You can also head for the **Eccles Community Coffee Bar** in the central mall area who point you or assist in getting help

When you are here:

What shops we have at the centre

Our most popular shops are:

Wilkos

Household Items,
DIY, Pet Supplies,
Stationary.

There are 2 entrances
- 1 on Church Street
opposite the bus
station, the other is
located in the
main square.



Boots

Health and
well being.

Located on the
main mall area,
just off the main
centre square.



Peacocks

Ladies fashion.

Located on the
main square,
heading towards
southway
entrance.



Specsavers

Spectacles &
Hearing Aids.

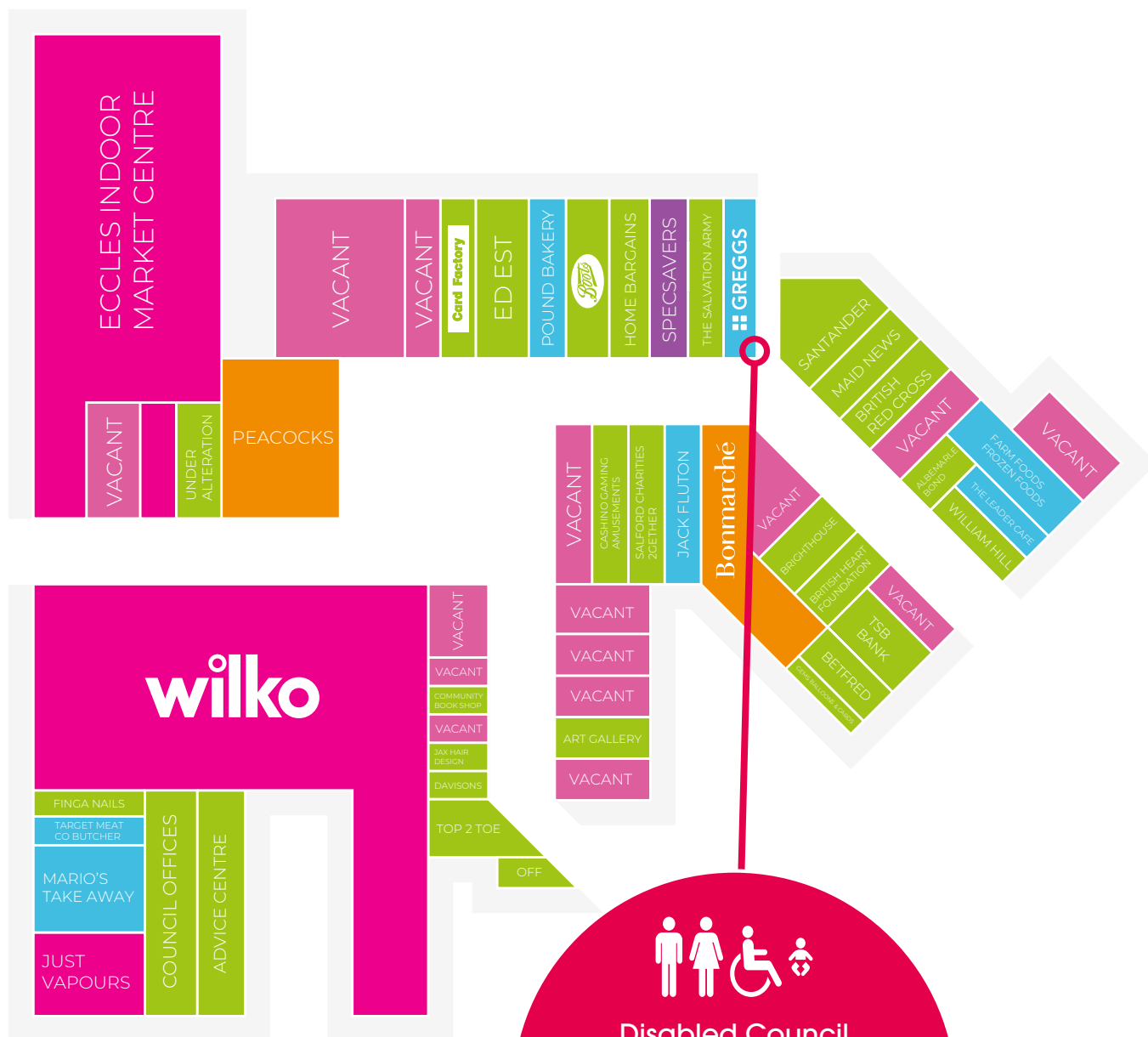
Located on the
main mall area,
just off the main
centre square.



When you are here:

Floorplan

The floorplan to the centre is below. If you are struggling to find somewhere, please do ask any member of The Mall, Eccles Shopping Centre Staff. A full list of our shops can be found at: www.eccleshoppingcentre.co.uk



Disabled Council Toilets available

Location: Greggs Alley, Side of Greggs

Nearest other toilets are **Morrisons** just over the road by tram stop



When you are here:

Places to eat

There are many places for you to get food from within the shopping centre:



Greggs sells:

Hot drinks, Pies, Pasty's, Sandwiches
Located in The Mall.



Poundbakery sells:

Hot drinks, Pies, Pasty's, Sandwiches
Located in The Mall.



The Larder sells:

Hot Food & Drinks
Located on Church Street, next to
William hill to the right hand side
of the Church Street entrance.



Eccles Community Coffee Bar sells:

Hot & Cold Drinks, Snacks
Located in the outdoor seating area.

Do you want to bring your own lunch?

Feel free to use any seating areas throughout
the mall area



Is there a shop or eatery you would like to visit while at the shopping centre?
Please use the space below if you would like to plan your visit:

<hr/>	<hr/>
<hr/>	<hr/>
<hr/>	<hr/>

When you are here: **People you may see**

While at the shopping centre, you may see the following people:



Security Staff



Cleaning Staff



Pest Control Contractor



Management Team



Other Shoppers

When you are here:
Things you may see



Photo Booths / ATMs



Kiddie Rides



Outdoor coffee cart

Flowering Planters on Malls



Promotional Kiosks

RMUs



Events

Seasonal decorations



We welcome any feedback you may have about this guide.

Did you find it useful?

Is there anything that would
have made your visit better?

Contact us:

Darren Askew

e: centremanager@eccleshoppingcentre.co.uk

tel: 0161 707 3058



Sponsored by

	Retail Marketing, Design & Print. Total sign and display solutions
	Contact: Steve Place 01483 303040 steve@giddenplace.com